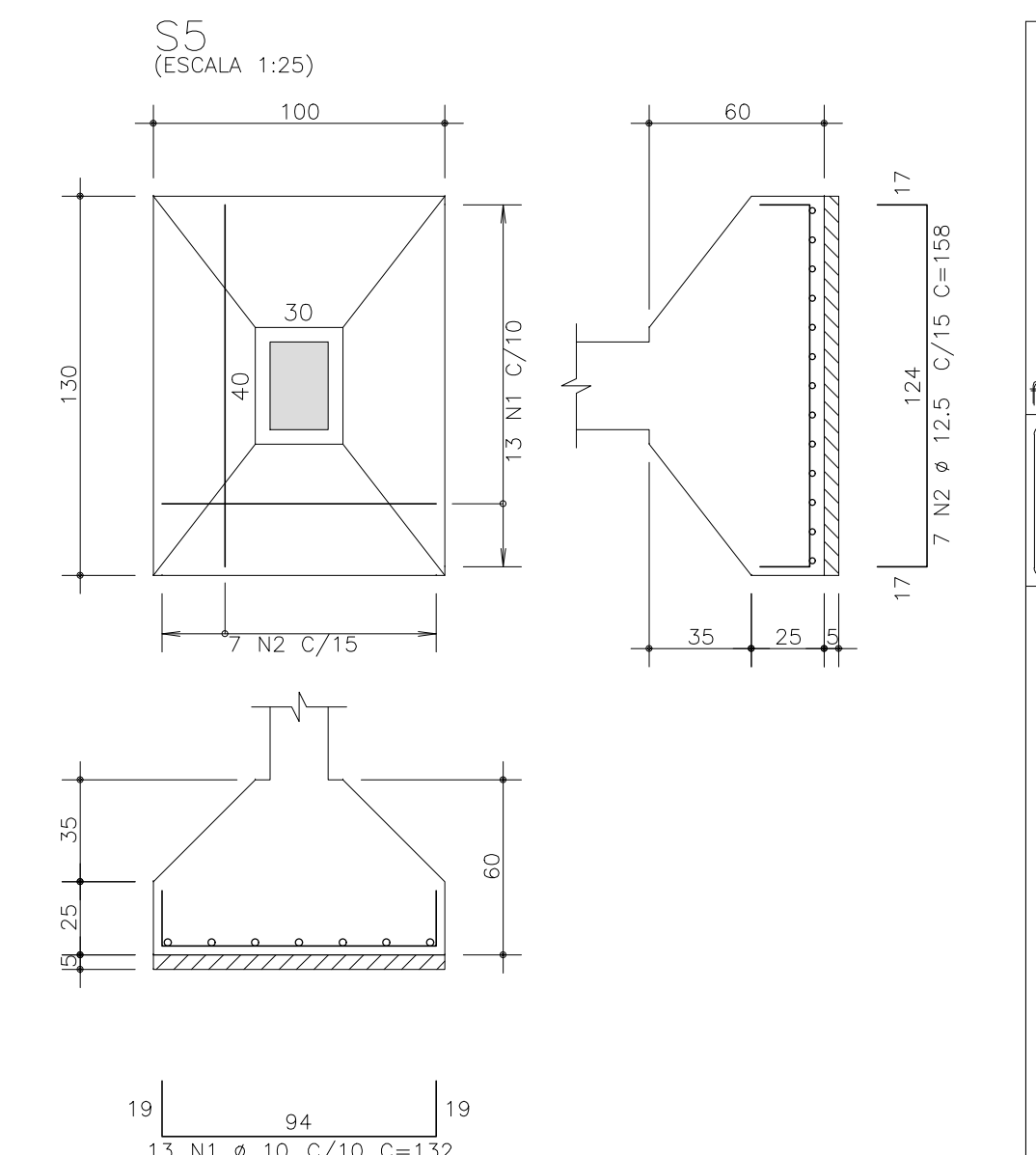
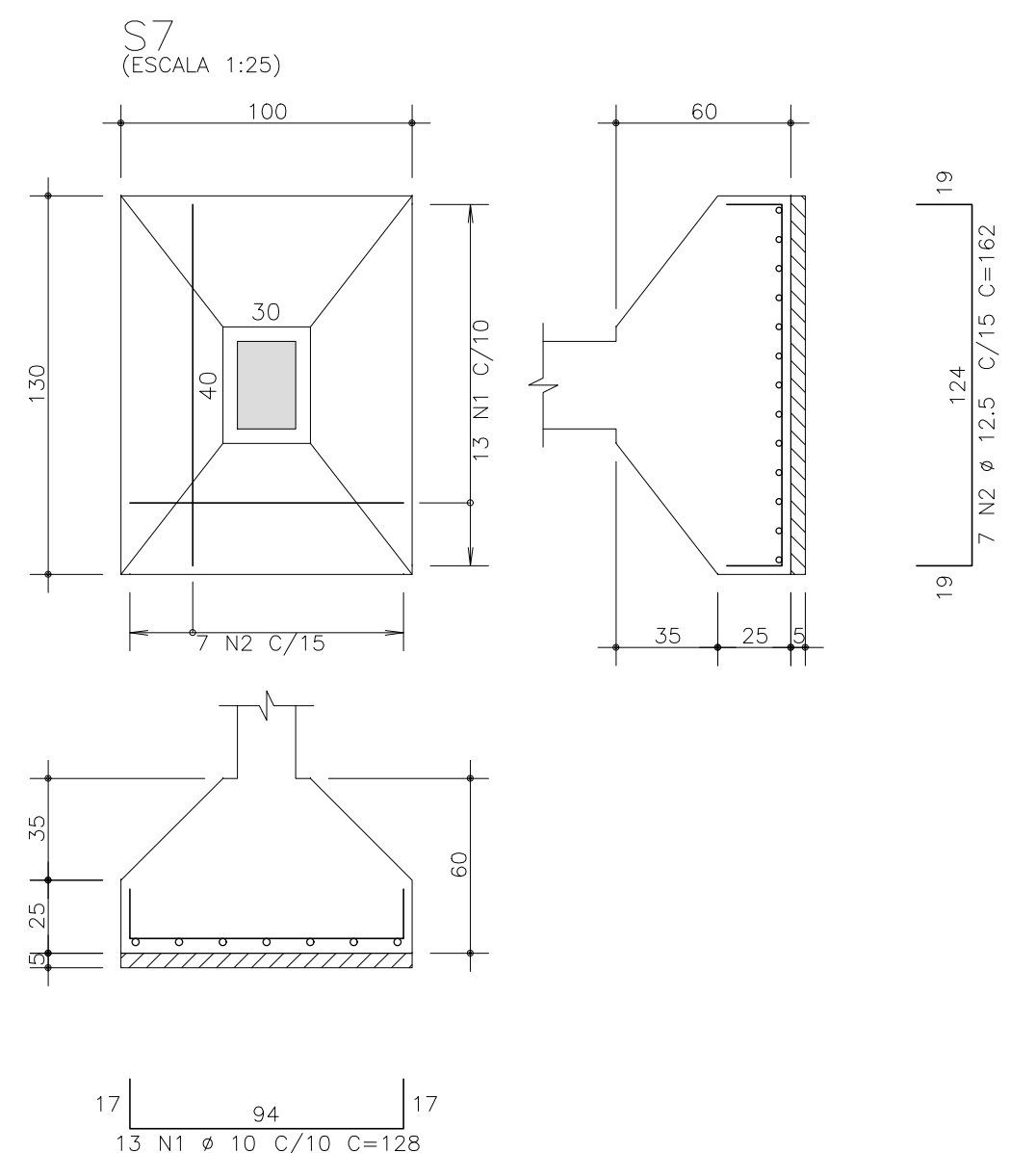
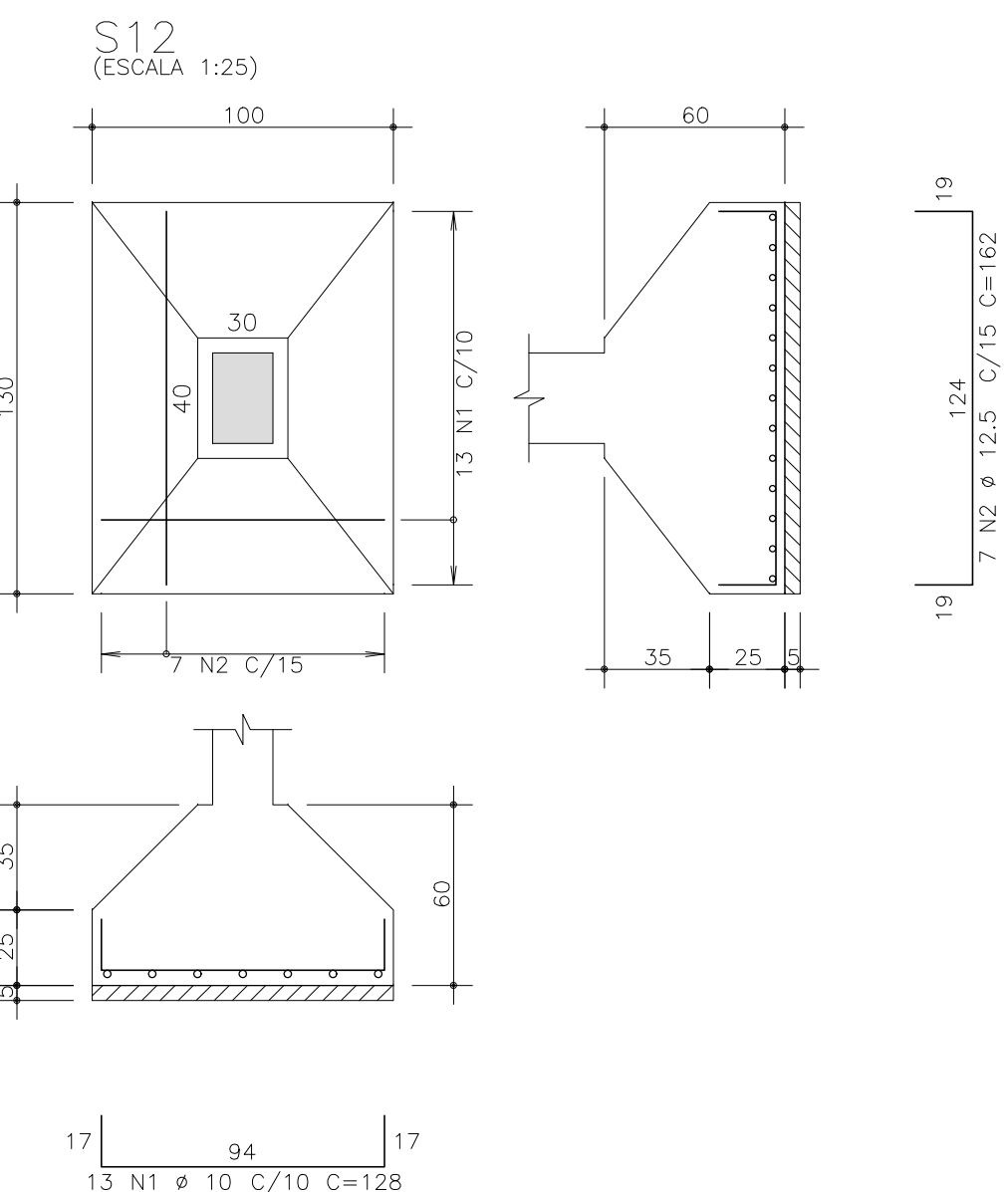
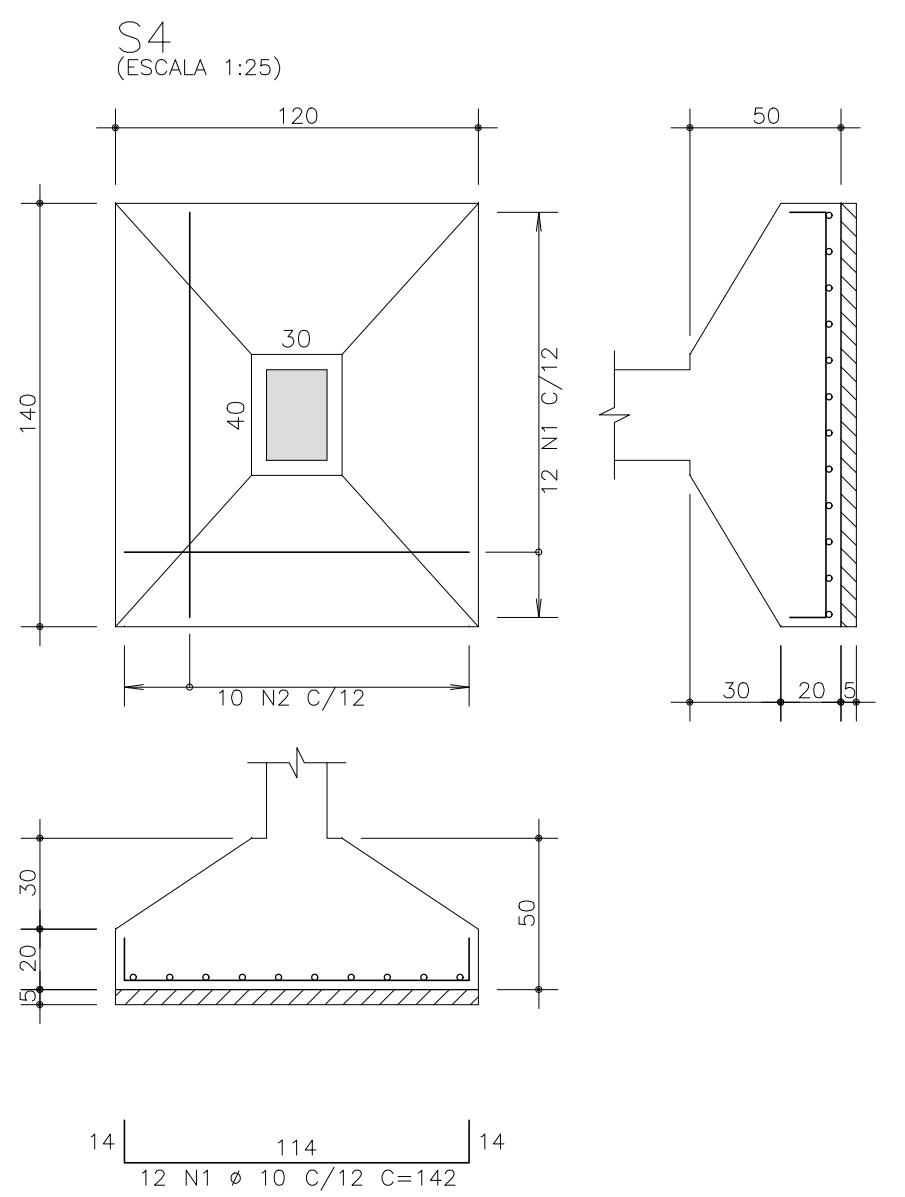
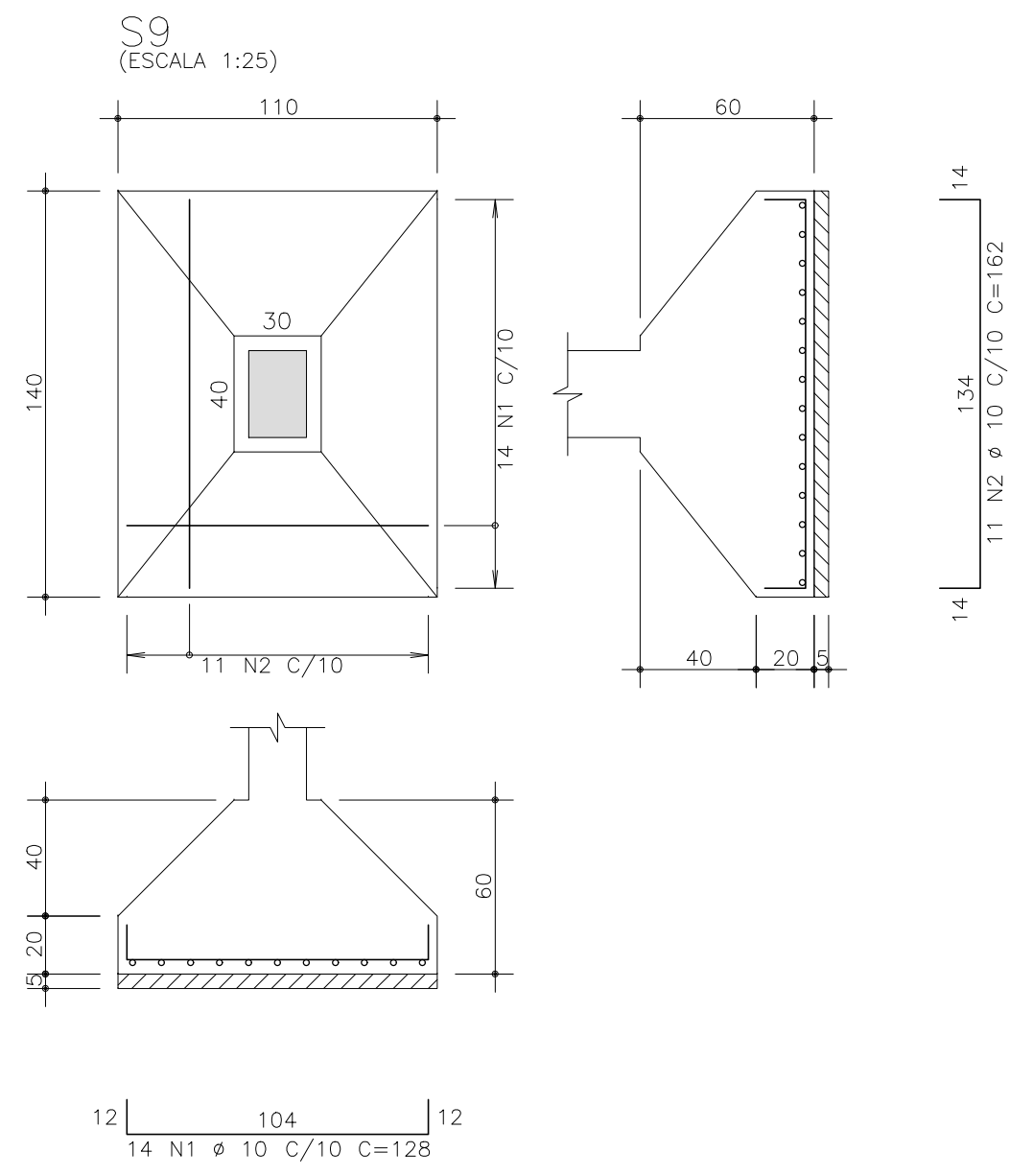
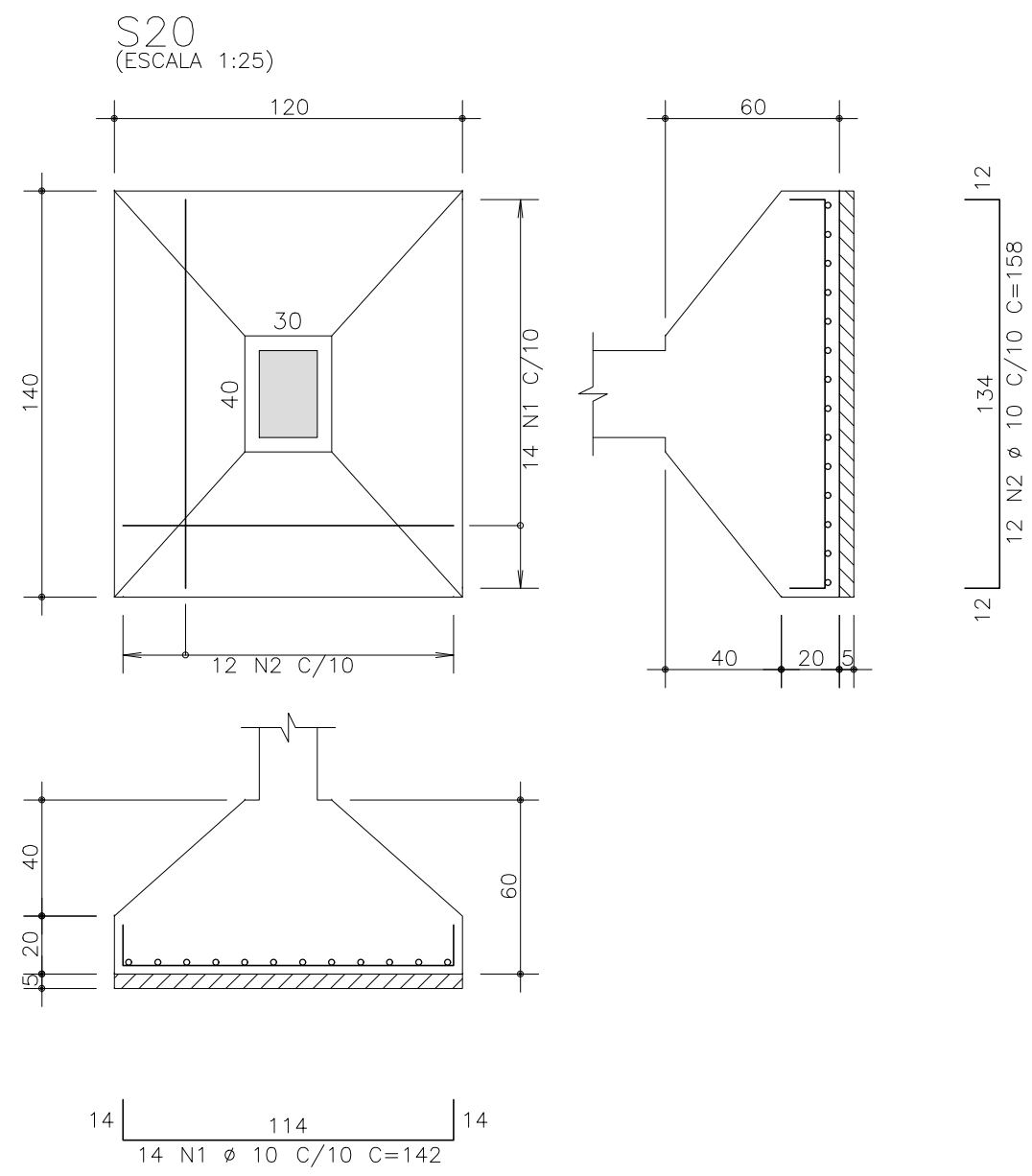
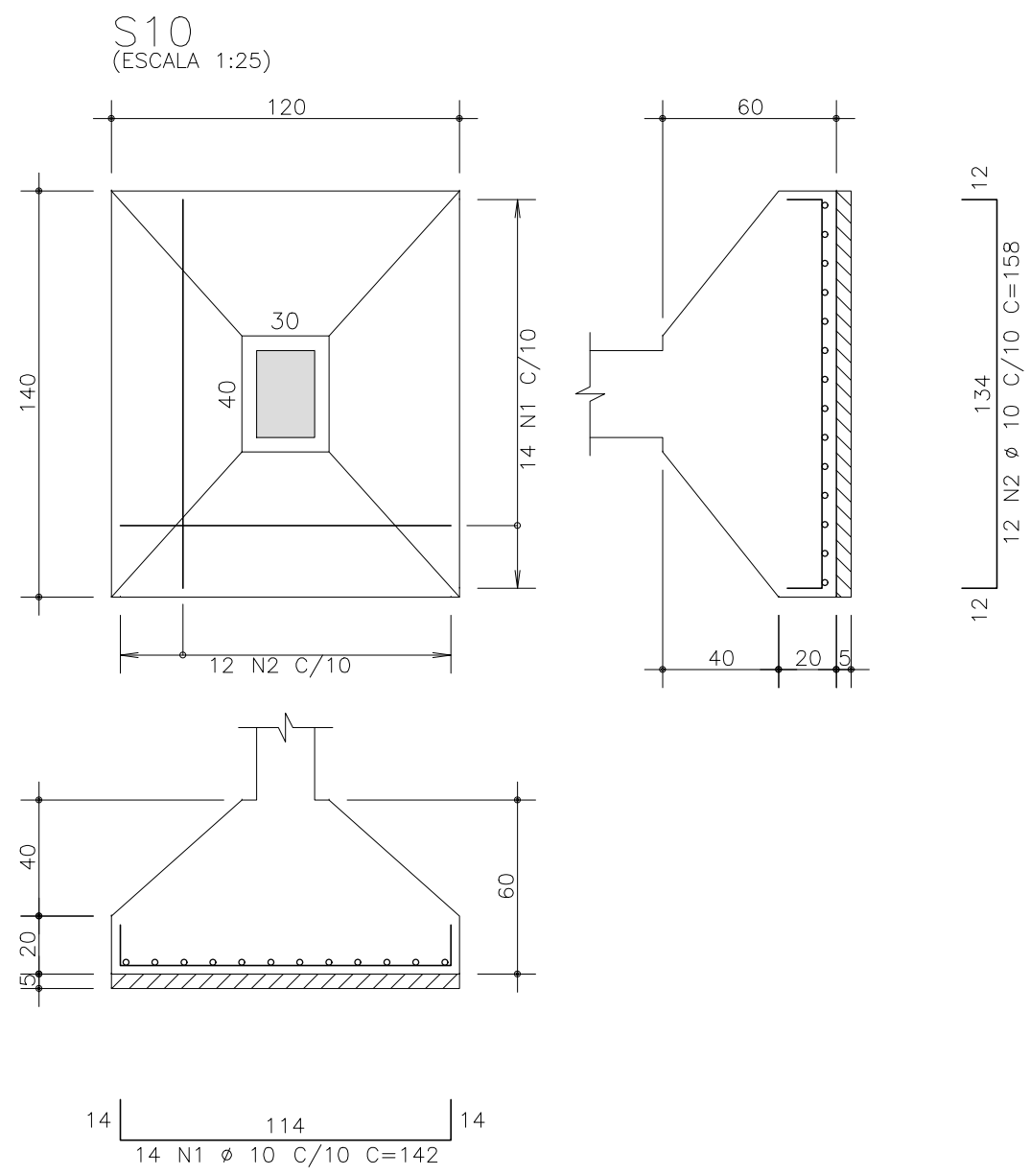
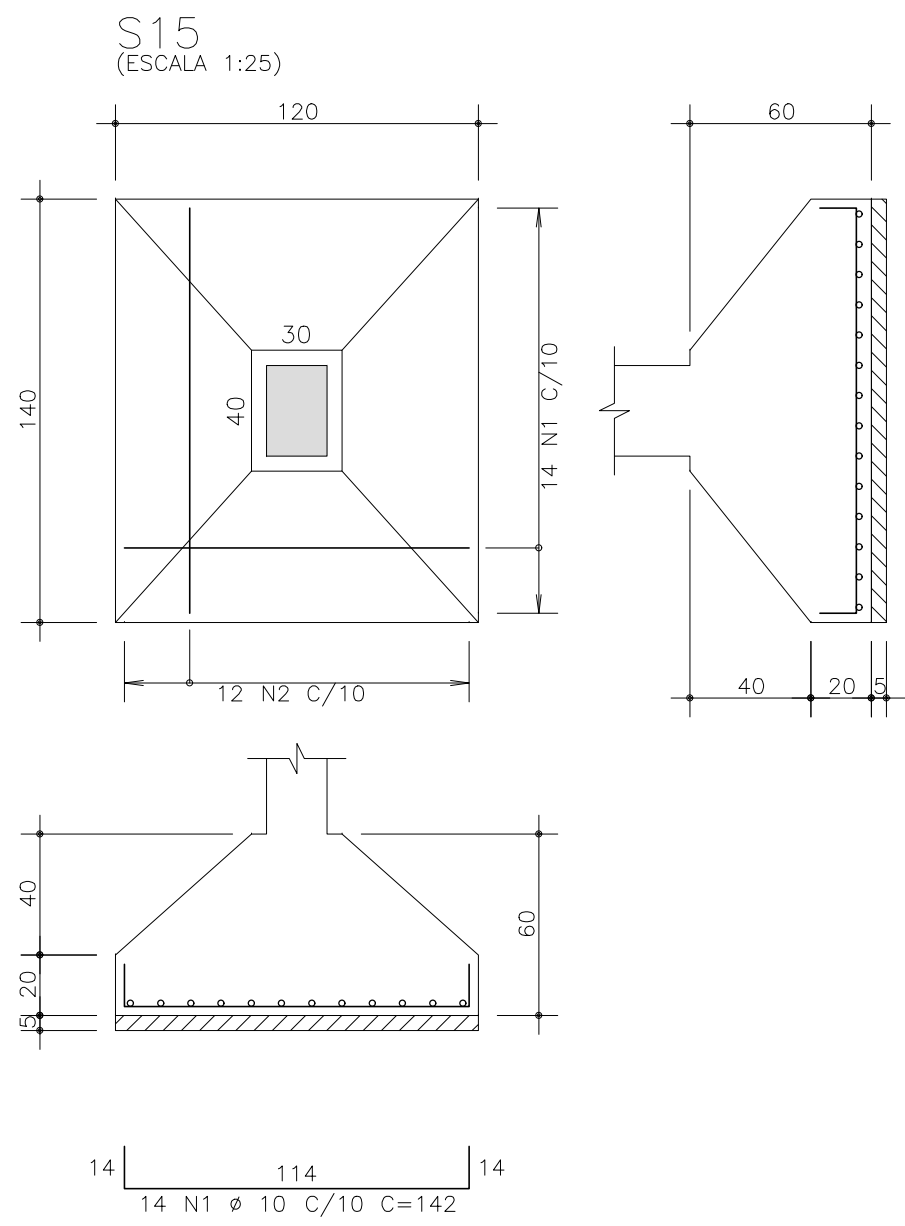


AÇO	POS	BIT (mm)	QUANT	COMPRIMENTO	
				UNIT (cm)	TOTAL (cm)
S1	50A	1	12,5	11	138
	50A	2	12,5	8	182
S4	50A	1	10	12	142
	50A	2	10	10	158
S5	50A	1	10	13	132
	50A	2	12,5	7	158
S6	50A	1	12,5	11	138
	50A	2	12,5	8	182
S7	50A	1	10	13	128
	50A	2	12,5	7	162
S9	50A	1	10	14	128
	50A	2	10	11	162
S10	50A	1	10	14	142
	50A	2	10	12	158
S11	50A	1	12,5	11	138
	50A	2	12,5	10	182
	50A	3	10	42	64
S12	50A	1	10	13	128
	50A	2	12,5	7	162
S15	50A	1	10	14	142
	50A	2	10	12	158
S17	50A	1	12,5	11	138
	50A	2	12,5	8	182
S20	50A	1	10	14	142
	50A	2	10	12	158

RESUMO AÇO CA 50-60			
AÇO	BIT (mm)	COMPR (m)	PESO (kg)
50A	10	262	162
50A	12,5	156	151
Peso Total 50A =			312 kg



O acesso ao Modelo Estrutural em dimensão pode ser executado pelo QR CODE ao lado, podendo acessar via celulares, tablets e quaisquer outros dispositivos.

fck 250. kg/cm2 – C25

**Schuring & Schuring Ltda.**  
Escritório Técnico B.E.SCHURING – Projetos de Engenharia  
Av. XV de Novembro, 489 – Porto Zo. Andar – Cuiabá MT  
Fone:(065) 321 9959 – Fax:(065) 623 5066 – Email – schuring@terra.com.br

PROJETO: **PROJETO ESTRUTURAL**

PROPRIETÁRIO:  
**PREFEITURA MUNICIPAL VARZEA GRANDE**  
**PROJETO ORLA DO PORTO ALAMEDA JULIO MULLER**

RESP. TEC. EXECUCAO:

OBRA: **ESCALA MENOR**

END.: Alameda Julio Muller, s/n  
Bairro Alameda / Varzea Grande – MT

AUTORES DO PROJETO:  
**Benedito Eliseu Schuring**  
Eng. Civil CREA 715/D-MT  
**Andre Luiz Schuring**  
Eng. Civil CREA 8697/D-MT

ASSUNTO:  
**SAPATAS**  
**DET ARM FUNDAÇÃO**

PECAS DETALHADAS  
S1 / S4 / S5 / S6 / S7 / S9 / S10 / S11  
S12 / S15 / S17 / S20

FCK:

ESCALA: 1:50

DIREITOS AUTORES RESERVADOS  
VERIFICAR MEDIDAS NA OBRA

DATA: 03/07/2019

FOLHA No: 02